



MORE SECURE,
MORE CONVENIENT.

QUICK GUIDE

17 Apr 2020, V1

FR300 Face Recognition Reader

WWW.MAG.COM.MY

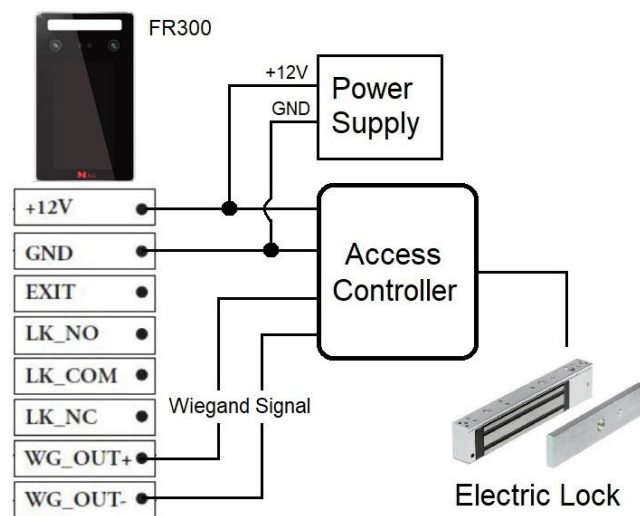
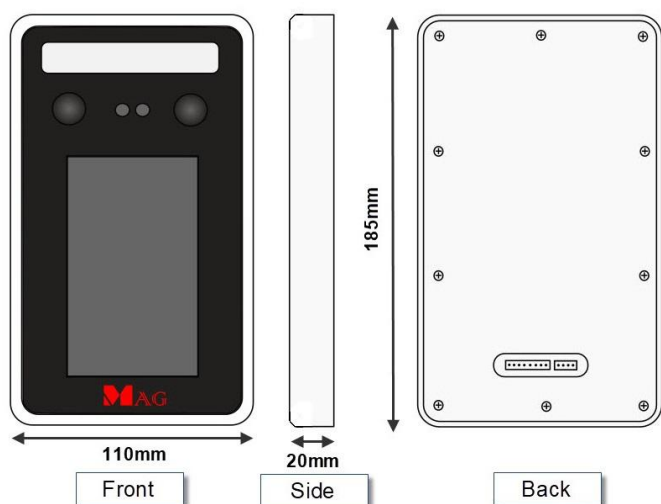


Technical Specification

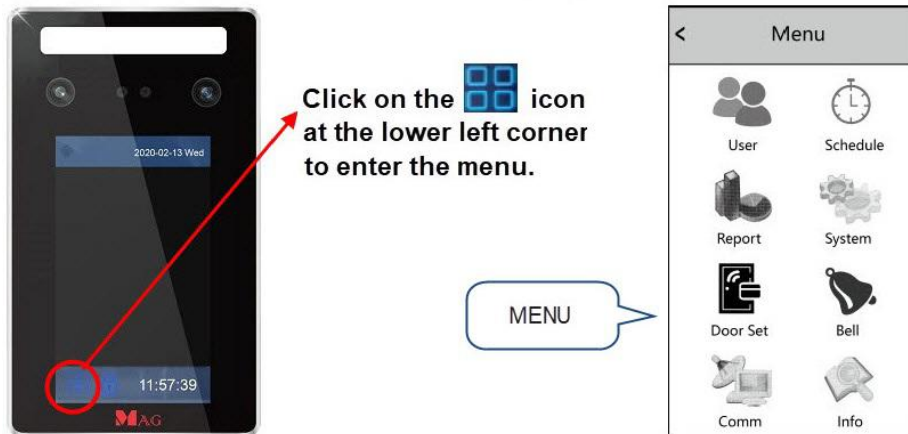
Description	Parameter
User ID/ Face Capacity	10,000
Event Record Capacity	1,000,000
Access Mode	Dynamic Face Recognition, PIN Face Recognition + PIN
Face Recognition Mode	1:1, 1:N
Validation Display	Name & Number
Real Time Face Detection	< 0.2sec
Intelligent Function	Infrared Live Person Identification Detection
Facial Scanning Range	Purely Dynamic Face Recognition: 0.5-3m Infrared Live movement detection: 0.5-1.5m
Dual Camera	ColorSense camera and IRSense camera
Dual Light	Smart LED light and infrared light
Display Screen	5 inch smart touch screen
Operating System	LINUX
False Rejection Rate (FRR)	<= 0.1%
False Approval Rate (FAR)	<= 0.001%
Relay Output	Lock Relay Output Alarm Relay Output
Relay Input	Door sensor
U-Disk Output	Yes
Push Button Input	Yes
Communication Interface	RS485, RS232, TCP/IP, WIFI
External Wiegand Port	Yes, WG26/34 Output/Input
Power Supply	DC 12V, 2A
Working Temperature	-15°C to 60°C
Casing	Aluminum alloy
Dimension (L x W x H)	110mm x 20mm x 185mm

Dimension

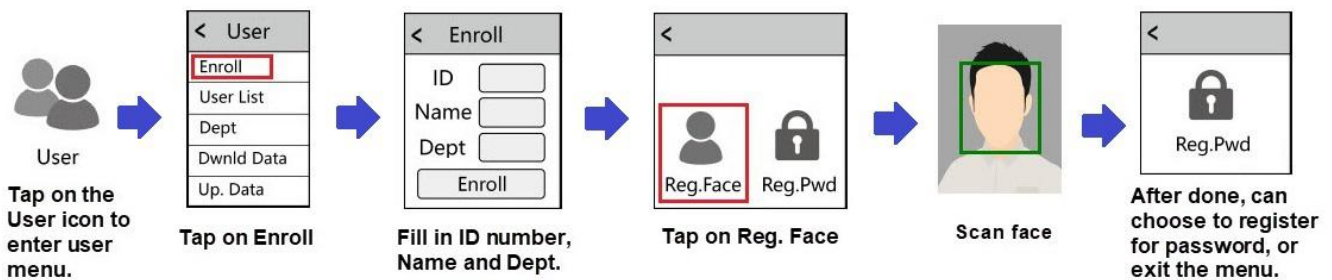
Wiring Diagram



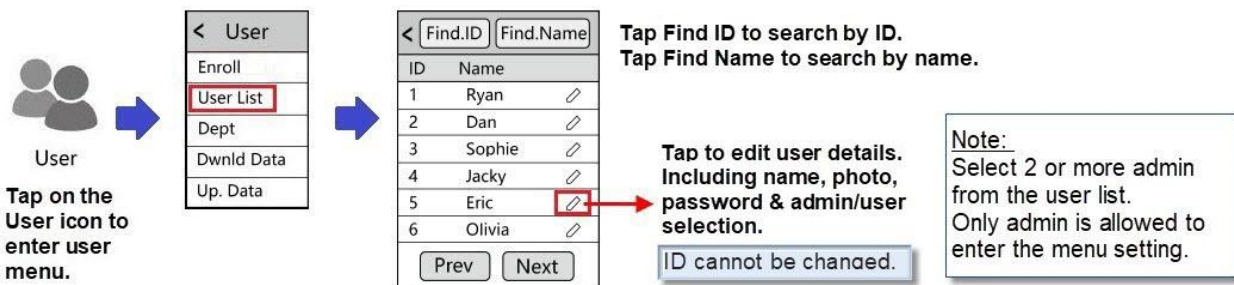
Functional Setting



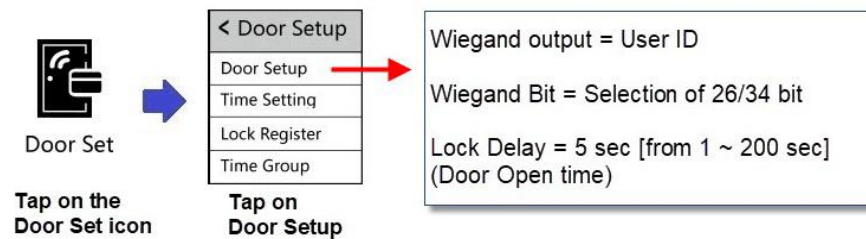
1) Enroll User



2) Check & Edit User List (Selection of Admin)



3) Door Setting (Door Open Time)



4) System Editing

