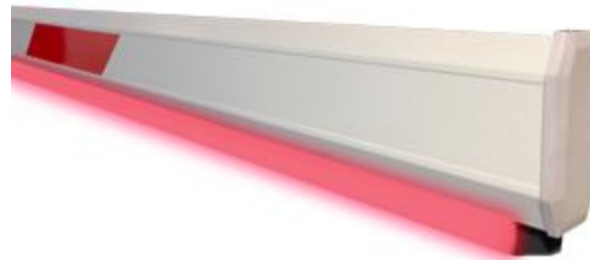


**5 METER LED LIGHT RUBBER LINING**

WWW.MAG.COM.MY



**Description**

MAG 5 Meter Straight Barrier Arm with LED rubber lightning are made of durable high quality rubber material, the rubber lining LED light can be easily installed underneath the straight barrier arm. The standard LED light length is 4.5m, but can be easily trim to shorter length according to customer requirement.

**Application**

The MAG Standard Straight Arm with LED Rubber Lightning is suitable for all Magnet Barrier Gate Models and is commonly used at outdoor parking areas at airports, shopping malls, warehouses, hotels, factories, condominiums, car rental companies, and other locations where vehicle access needs to be controlled for security or safety purposes.

RED light indicate standby mode where barrier arm is down (close). GREEN light indicate valid access mode where barrier arm is up (open).

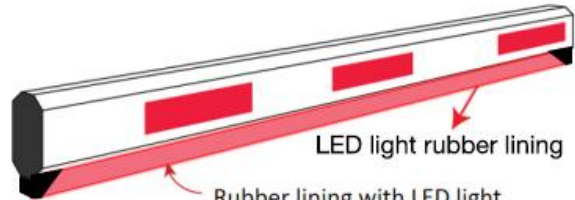
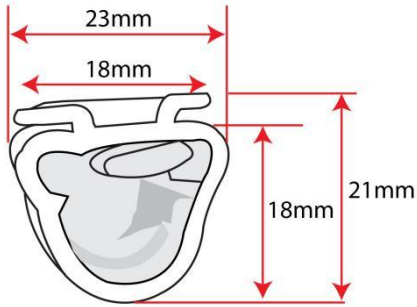
**Features**

- ✓ **Durability and Weather Resistance**, The high quality rubber materials make it more durable and not easily broken. It is also suitable to install at outdoor environment.
- ✓ **Lightweight** , The lightweight make it easier to carry with minimum manpower and will not make the barrier arm too heavy when installed underneath.
- ✓ **Spare Part Availability**, This is an important feature as it ensures that the site is not exposed to security threats for an extended period in the event of damage to the arm. MAG offers complete spare parts and repair services locally at an affordable price to ensure that the gate can resume operation in the shortest time possible. This feature provides peace of mind to the owner of the barrier that they can quickly fix any issues with the gate

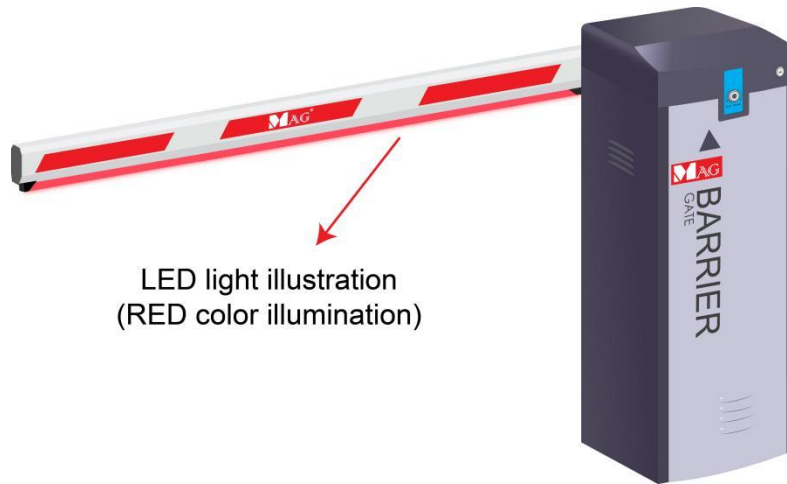
**Technical Parameters**

Description	Parameter		
Length	Model	Barrier Arm	LED Light
Recommended	BR660T	5 meter	4.5 meter
LED light materials	LED Bead Strip		
LED light colour	Red and Green		
LED Housing materials	Rubber		
Power supply input	12V - 1.3A		
Power consumption	16 watts (4.5meter LED)		
Weight	5kg		
LED Dimension	21 x 23 x 4500mm		

## Dimension



Rubber lining with LED light underneath barrier arm for illumination and reduce dent damage in the event top down collision with vehicle.



\*Product performances is based on testing in a controlled environment. Your result may vary due to several external and environment factors.

© COPYRIGHT 2023. This documentation served as a reference only. It is subject to change without further notice. All the diagrams and information in this documentation may not be duplicated or modified in any form without the written approval from the management.

© 2023 SP 6M STRAIGHT BARRIER ARM WITH LED RUBBER LINING

