

# STING

Electromechanical automation for swing gates  
up to 3m - 400 kg



For residential and  
collective usage



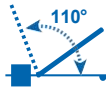
Available in 230V and 24V



**#fastasyoulike!**  
**STING/BOOST**  
gate opening at 90° in 9"



# STING



Door opening up to 110°.

Robust and reliable operator, in an enclosed body



Quick unlocking with customised metal key



Get rid of ground stops by using the mechanical stops (optional)

Reversible version  
art. STING/24/R



STING BLACK

STING DARK GREY

No risk of the gate operation stopping in a power outage thanks to the backup batteries (optional, art. BAT, code 629290) that can be installed on 24V models



The DE@NET external universal control board makes this operator compatible with NETLINK System.



Compatible with NETCOM, the device for installation, maintenance and remote management, from your office!



Greater installation versatility thanks to the adjustable fixing plates excluded (art. MLS/SFR)

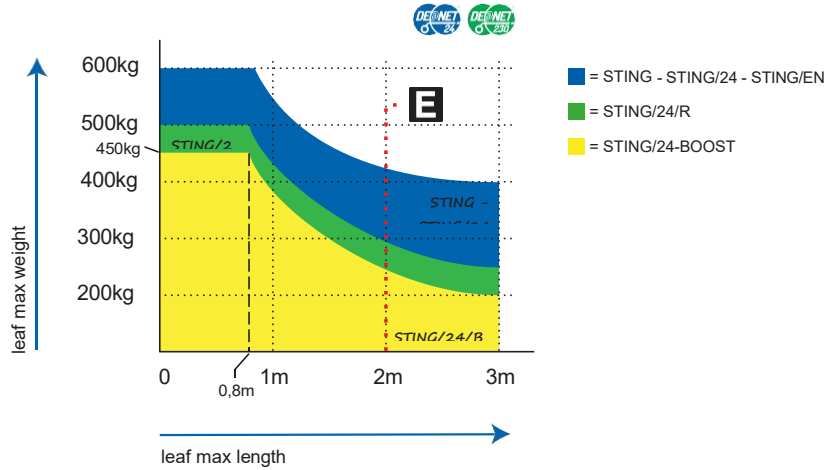


STING		16"
STING/BOOST	Opening time about 90°	9"
STING/24/R		12"

Note: the opening time may increase depending on the characteristics of the installation

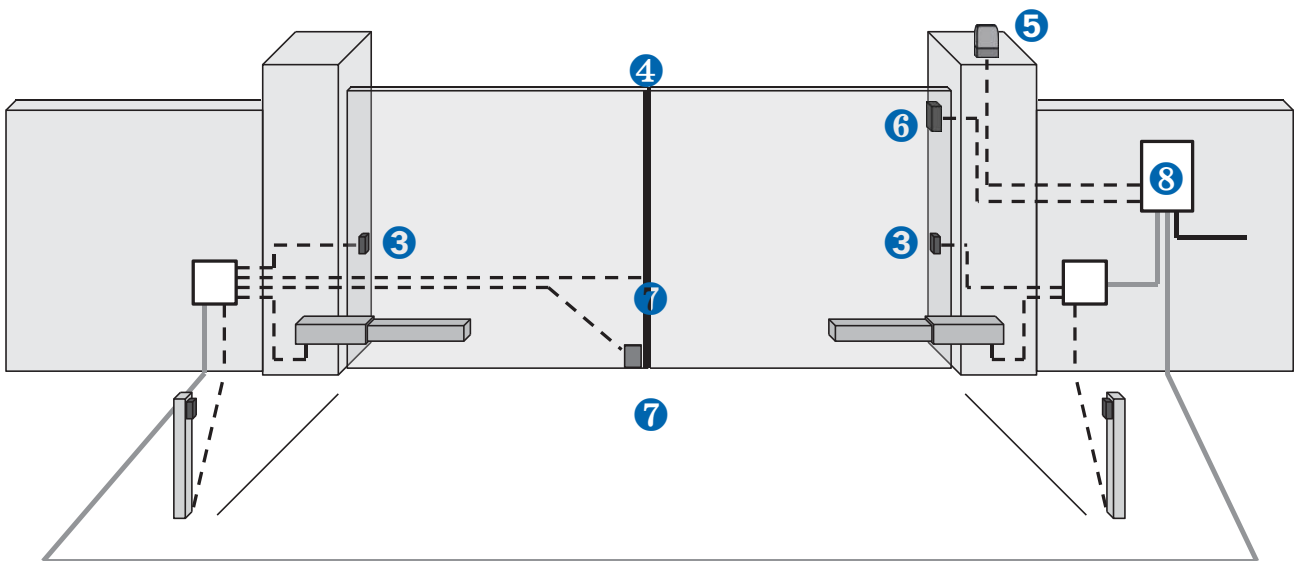
**Fast maneuvering with STING/BOOST: the 24V model of the STING range with a minimum opening time of 90° in 9 seconds. Available in kit.**

## Guide to use



If the leaf length is bigger than 2m or if you use reversible models you must install the electric-lock to block the gate in closed position. The height and the leaf structure, as well as the presence of strong wind, can cause the reduction of the value of the data contained in table or make it necessary to use an electric lock also for leaves shorter than 2m.

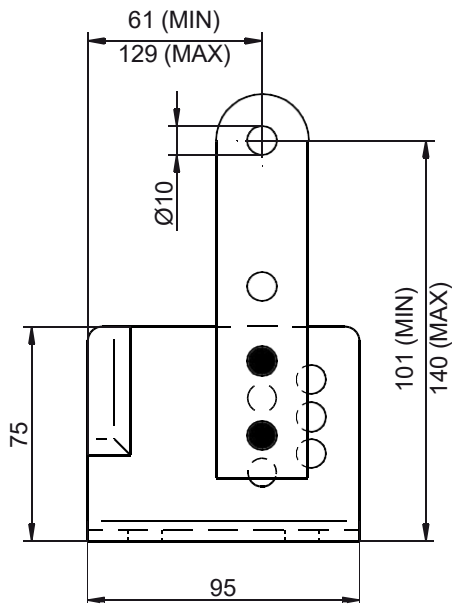
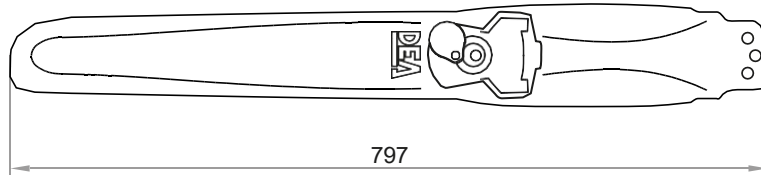
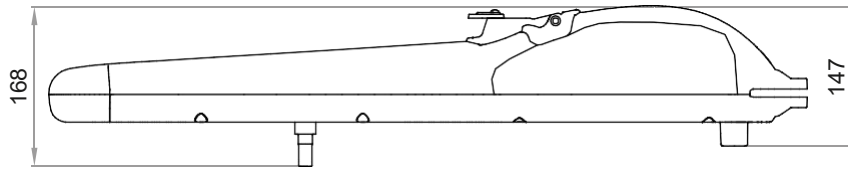
## Wiring



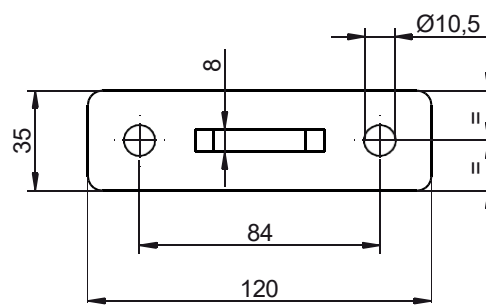
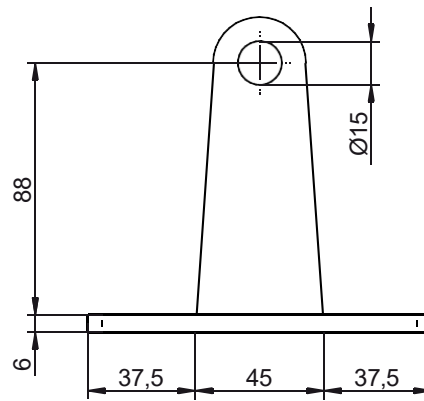
- Corrugated pipe for power supply cable
- Ø40 corrugated pipe for connection between the control board and the junction box
- - - Ø20 corrugated pipe or external PVC conduit for connection between the control board and the command and safety accessories

pos.	description
1	Column with photocells
2	Operator
3	Photocells
4	Safety edge
5	Flashing light
6	Key switch/Keypad
7	Junction box
8	Control board
9	Electric-lock

# Dimensions

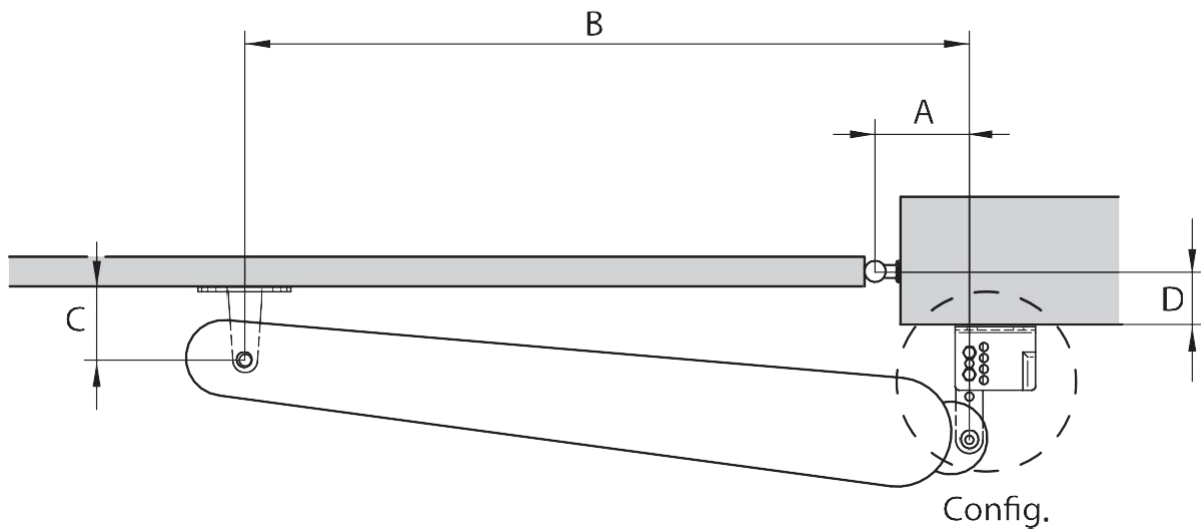


rear



front

## Installation dimensions



Art. STING	
Config. 1	Config. 2

STING + Art. MAC_FM						
	Config.	A	B	C	D	Note
90°	1	125	685	94	0+50	* Senza fermi meccanici in apertura (corsa max 367 mm), Without mechanical stops in opening (max stroke 367 mm), Sans arrêts mécaniques en ouverture (course maxi 367 mm), Ohne mechanische Anschläge an Öffnung (max Hub 367 mm), Sin finales de carrera mecánicas en abertura (recorrido max 367 mm), Sem fins de cursos mecânicos no abertura (curso Max. 367mm), Bez ograniczników mechanicznych na otwarcie (max wysuw 367 mm), Без механических упоров на открытие (ход штока макс 367 мм).
	2	125	685	94	50+75	
	2	140	685	109	75+100*	
	2	140	685	114	100+125*	
100°	1	160	690	104	0+25*	

STING						
	Config.	A	B	C	D	Note
90°	1	125	720	94	0+50	
	2	125	715	94	50+100	
	2	150	715	124	100+125	
100°	1	160	720	104	0+25	
	1	170	720	109	25+50	
110°	1	185	720	99	0	
	2	185	720	99	25	