

SPECIFICATION



FA131 MAG Face Recognition Reader



FA131 MAG Face Recognition Reader

Description

The MAG FA131 is an easy-to-use face recognition reader with advanced technology for fast and accurate detection. Its sleek, compact design and full HD display make it a perfect fit for any commercial space, whether for door or pedestrian access. Ideal for use in offices, schools, hospitals, airports, condominiums, factories, and more.

Features

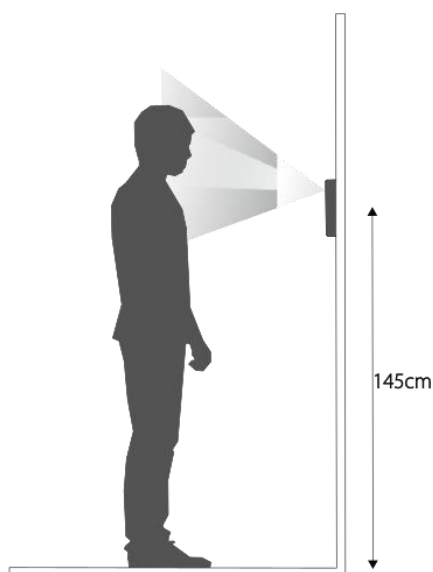
- 1. Extra wide lighting (EWL).** Even under high contrast or lower lighting conditions, it is still able to scan your face accurately.
- 2. 3 in 1 Face recognition reader.** Now FA131 is come with 3 access mode which is face recognition, card, and pin. Hence FA131 is easier to cater for any places and usage.
- 3. High face capacity up to 5,000 face.** With the high face capacity, it is ideal for usage in any office, school or any commercial building.
- 4. Mask detection.** Reader can differentiate if the face is with or without the mask. FA131 can be set to deny access when the face is scanned without a mask.
- 5. Automatic Adaptive Distance Reading (AADR) technology.** Automatically adjust detection area to accurately capture all critical biometric point even though when the face is moving. This is to ensure accurate recognition.
- 6. Automatic Depth Measuring (ADM) technology.** Able to detect face at front and back, but priority on the face at front. This is to minimize front-gating where an authorized people trying to cheat for access.
- 7. Dual camera featuring IRSense and ColorSense technology.** Both technology work hand-in-hand to reject displayed face photo or video under low lighting environment. Additional LED light will be automatically illuminated in order to recognize face in dark environment condition.
- 8. Adjustable detection range.** The detection range can be adjusted between 0.5 meters up to 2.5 meters to cater different people traffic flow pattern at site.
- 9. Sleep mode function.** Reader will hibernate if there is no face detection after a prefix time. This help the reader display to be more long lasting. For crowded environment, you can set to wake up the reader only by touching the LCD screen instead of the default wake up upon scanning any face that passes by.

Technical Parameters

User ID/ Face Capacity	5,000
Event Record Capacity	500,000
Access Mode	Face , Card, or Pin Face + PIN, Face + Card, Card + PIN
Face Recognition Mode	1:N
Validation Display	Name and avatar (enrolled picture as thumbnail)
Real Time Face Detection	< 0.2sec, single face
Intelligent Function	Live person identification detection
Facial Scanning Range	Without live movement detection: 0.5-2.5m (normal sufficient lighting condition)
	With live movement detection: 0.5-1.5m (normal sufficient lighting condition)
Dual Camera	1MP EWL ColorSense Camera and IRSense Camera
Dual Light	Smart LED light and infrared light
Display Screen	4 inch Full HD Capacitive touch screen
Mask Detection	Can disable, enable or set as compulsory. Best detection with normal bright color face mask. *Accuracy of recognition will decrease with fancy or black color face mask.
Operating System	LINUX System
Face Recognition Accuracy	99.70%
False rejection rate (FRR)	<= 0.1% (with actual face without mask)
Relay Output	Lock Relay dry contact output (N.O, N.C and COM)
USB	Yes, for updating firmware, download and upload data (standalone)
Push Button Input	Yes
Communication Interface	TCPIP or WIFI (stability is dependent on wireless signal quality)
External Wiegand Port	Yes, WG26/34 Output/Input
Power Supply	DC 12V, 2A
Working Temperature	- 15°C to 45°C
Casing Material	Hard Plastic Case
Dimension (L x W x H)	165mm x 80mm x 25mm
Ingress Protection	IP4X

Installation Recommendation

It is recommended to install 2m away from light source and 1.5m installation height from the ground

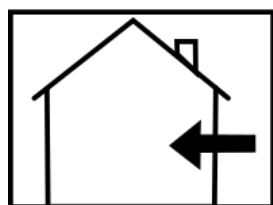


Recommended Installation Height
145cm ~ 160cm

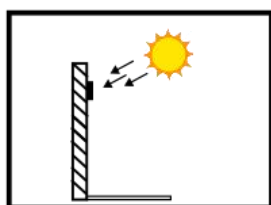
**Please note that the installation height is based on the average staff height.

*the device should not be exposed to direct sunlight for long term stability. The LCD and internal electronic might be shorten significantly from direct sunlight exposure. It is recommended to install awning to protect the the reader.

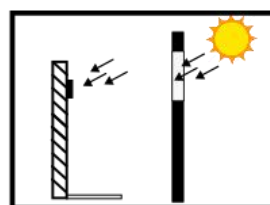
Recommended Locations



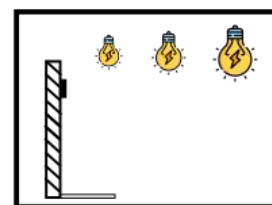
**Install Indoor
Only**



No Direct Sunlight



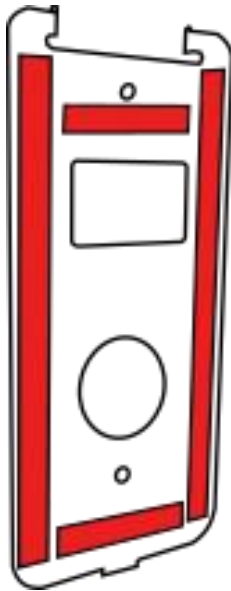
**No Indirect Sunlight
Through Window**



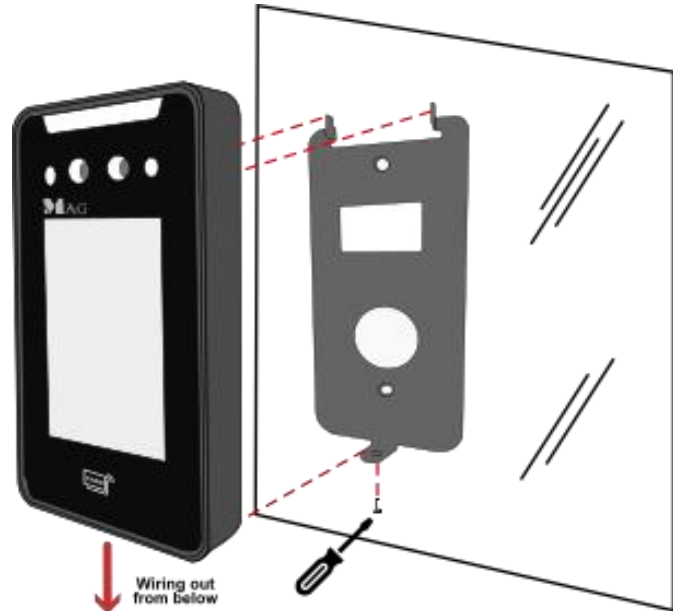
**Dont Too Close to
Light Source**

SPECIFICATION

Installation on Glass Door/Wall

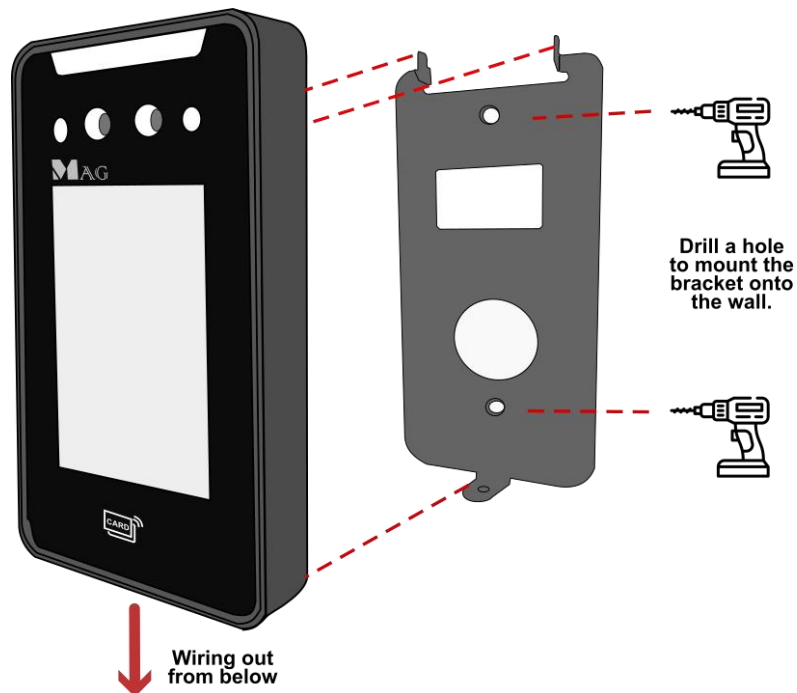


Use VHB/Industrial
Double Sided Tape



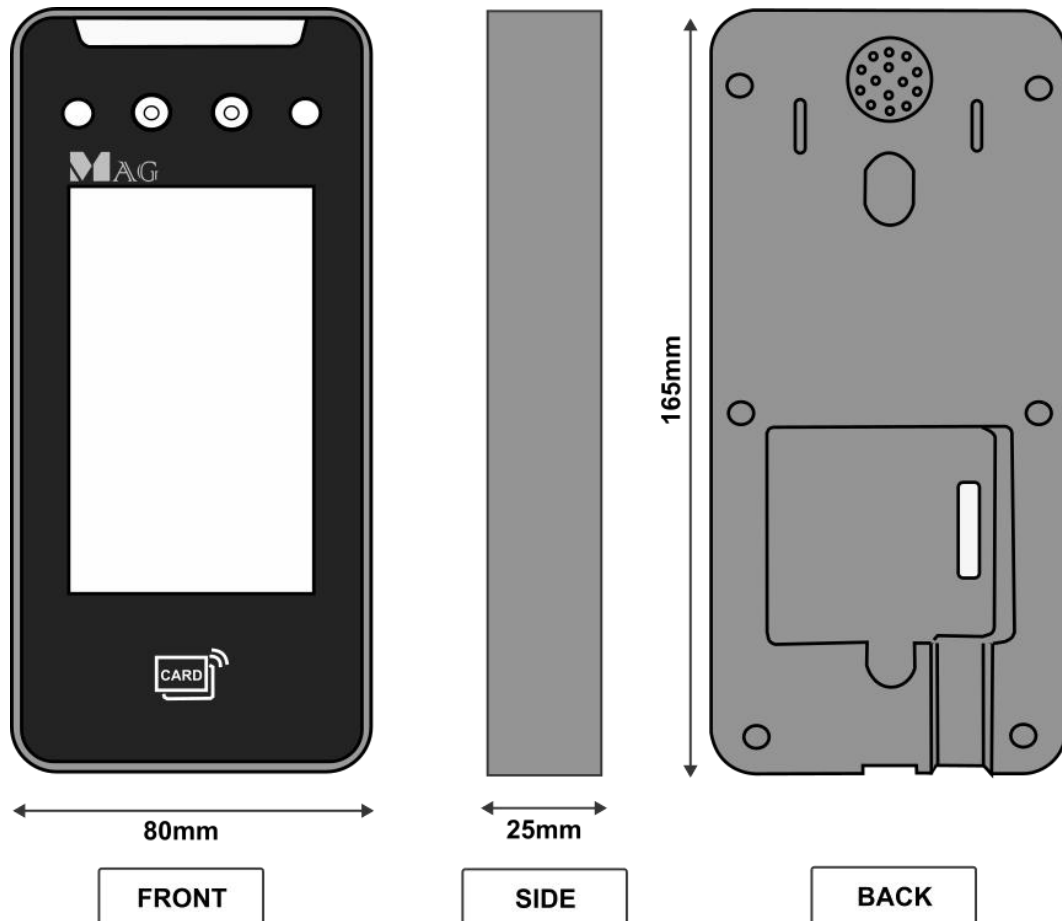
Install The Wall Bracket
and device to a Glass
Surface

Wall Mount Bracket Installation



Installation to mount the bracket onto the wall

Dimension



***Product performances is based on testing in a controlled environment. Your result may vary due to several external and environment factors.**



© COPYRIGHT 2025. This documentation served as a reference only. It is subject to change without further notice. All the diagrams and information in this documentation may not be duplicated or modified in any form without the written approval from the management.