

## BRD02 Traffic Detector

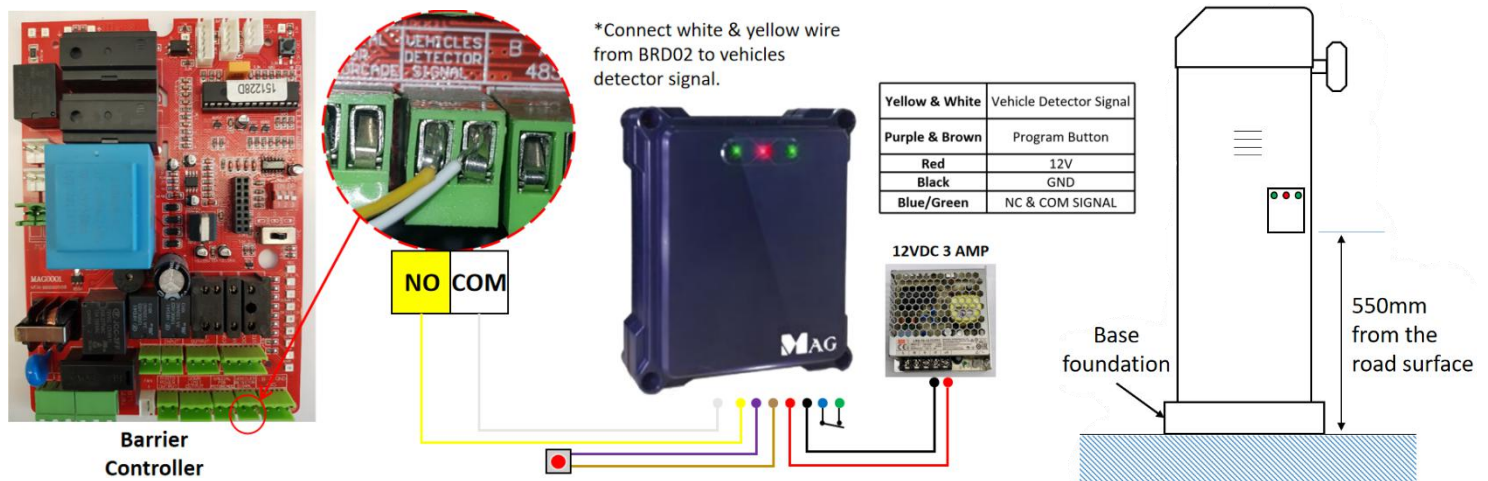
WWW.MAG.COM.MY



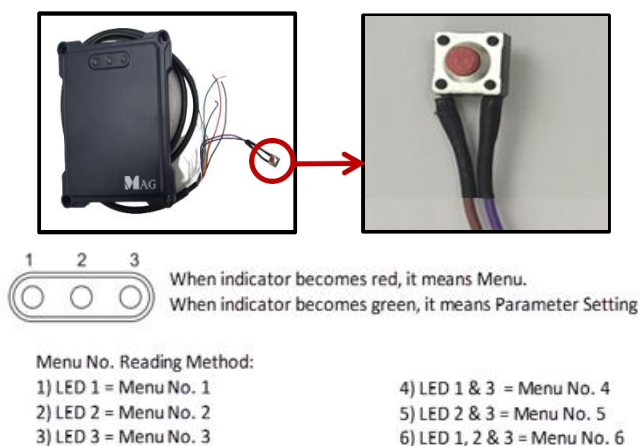
### Technical Specification

Description	Parameter
Input Voltage	DC 12V, 150 mA
Working Frequencies	24 - 24.5 Ghz
Modulation Mode	FMCW
Transmission Power	10 - 15 dBm
Detection Distance	1 - 6 Meters, $\pm 0.2$ meters
Working Temperature	-40°C - 85°C
IP Rating	IP 67
Dimension	115mm (L) x 95mm (W) x 25mm (H)

### Installation and Wiring



### Menu selection



#### Setting instruction:

1. Press and hold the button for 3 seconds.
2. Wait till all 3 LED light starts to blink.
3. The red light will be blinking from left to right.
4. Let go the button when the blinking LED is the menu you want. (Look at Table 1)
5. The LED will turn green once in the setting.
6. Adjust setting by using the button.
7. After done, press and hold the button until all red LED flash then let go the button, it will automatically save and exits the menu.

\*(Note: After setting, it must be saved; otherwise the setting will not change and the detector will automatically exit the menu setting after 10 seconds)

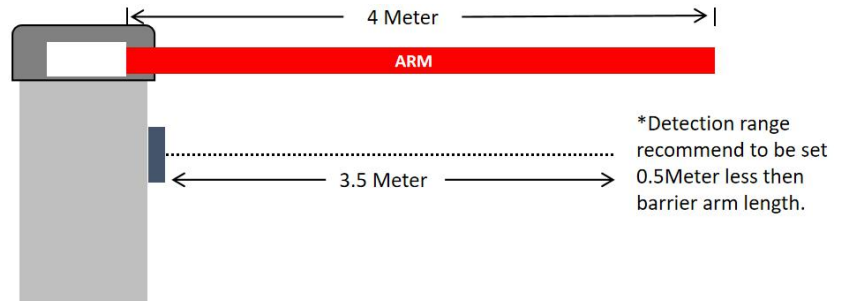
# Function Parameter Setting and Description

## Traffic Detector Parameter Setting

Menu No.	Parameter Setting	Remark	Default Value
LED 1	Set maximum detection distance	Accumulate 0.5m each time	2.5 meters
LED 2	Detection sensitivity	1 : Low / 2 : Medium / 3 : High	2

### 1) Detection distance

- Default distance is 2.5 meter.
- When detection distance is 1 meter, Green light LED 1 is Hold.
- When detection distance is 1.5 meter, Green light LED 1 is blinking
- The longer the detection distance, the more LED will turn on.



LED Indicator	Distance (meter)	Green LED Status	LED Indicator	Distance (meter)	Green LED Status
LED 1	1.0	Hold	LED 1 & 3	4	Hold
LED 1	1.5	Blinking	LED 1 & 3	4.5	Blinking
LED 2	2.0	Hold	LED 2 & 3	5	Hold
LED 2	2.5	Blinking	LED 2 & 3	5.5	Blinking
LED 3	3.0	Hold	LED 1, 2 & 3	6	Hold
LED 3	3.5	Blinking			

Table 2

#### Setting instruction:

1. Press and hold the button to enter Menu 1.(Look at table 1)
2. When the LED 1 red light is on. Let go the button.
3. Press the button to set the distance.(Look at Table 2)
4. After select distance. Press and hold the button, all 3 LED red light start blinking.
5. After setting is done only LED 2 red light will on.

\*(Note: Make sure detection range is 0.5 meter less then the actual arm length)

### 2) Detection sensitivity

- Default sensitivity is medium.
- When sensitivity is medium, LED 2 green light is Hold.
- Higher sensitivity, different LED will turn on from LED 1 to 3.

LED Indicator	Sensitivity	Green LED Status
LED 1	Low	Hold
LED 2	Medium	Hold
LED 3	High	Hold

Table 3

\*(Note: For Trucks or High Base Vehicle Please set sensitivity to High and refer to the installation manual for more information.)

#### Setting instruction:

1. Press and hold the button to enter Menu 2. (Look at table 1)
2. When the LED 2 red light is on. Let go the button.
3. Press the button to adjust the sensitivity. (Look at table 3)
4. After selecting sensitivity, press and hold the button until all 3 LED red light start blinking.
5. After setting is done only LED 2 red light will on.

### 3) Compulsory update background calibration

It is compulsory to perform update background calibration for radar to learn the new ambient environment to ensure accurate detection.

#### Setting instruction:

1. Before start update background make sure there is nothing in front of the radar detector distance.(Default distance 2.5 meters)
2. Turn off the power supply.
3. Press and hold the button.
4. Turn on the power supply.
5. Quickly let go the button when the three green LED light turn ON.
6. Press the button 5 times. You will see green light on LED 1 & LED 3 start blinking.
7. After update is completed only red LED 2 light will remain ON.

#### SPECIAL NOTE

\* Make sure to use low noise power supply.

\*Only install the BRD02 on flat surface and do not install it in front uneven road surface.

\*For fence arm barrier setting, please refer to full installation manual.

\*For full installation manual and setting, please scan the QR Code beside.

SCAN HERE:

