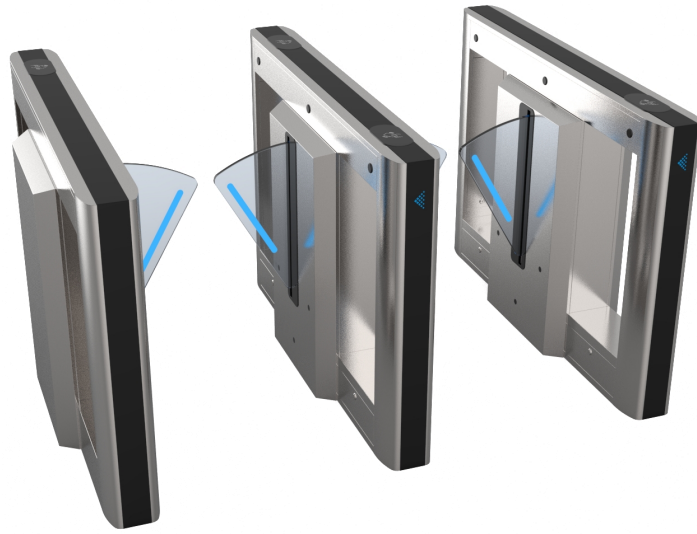


SPECIFICATION



FPG257

LINE FLAP BARRIER



FPG257 LINE FLAP BARRIER

Description

Introducing the innovative FPG257, an essential flap barrier designed for pedestrian access control. Flap barrier panel will retract automatically once an authorization is received from access controller system. This swift motion enable it to effectively manage high pedestrian traffic.

Through focusing on core functionality and streamlined build, FPG257 is designed to provide a cost-effective and robust solution for managing pedestrian traffic.

Features

✓ **Reliable**

Brushless motor drive delivers low noise and smooth operation. The absence of mechanical limit switches and carbon brush improves service lifespan and simplified maintenance.

✓ **Effective and Functional**

Smart controller board with LCD screen is operator-friendly. Standard features including consecutive access memory, multiple operation modes, and auto-close delay are all available to facilitate effective pedestrian access control.

✓ **Double Safety**

6 pairs of infrared sensors will detect passage sequence and prevent accidental closing. Coupled with smart algorithm, motor will reverse upon detecting an obstructing force on the door panel, minimizing risks of injury.

✓ **Emergency Evacuation**

FPG257 will automatically open in case of power-loss, or can be configured to open immediately when fire alarm signal is received.

✓ **Illegal Access Alarm**

During unauthorized events (e.g. illegal or reverse ingress), buzzer alarm will be triggered for caution and alert.

✓ **User Friendly**

RGB user guidance light is available on both sides and the door panel to intuitively guide the user into the passage through colour switching.

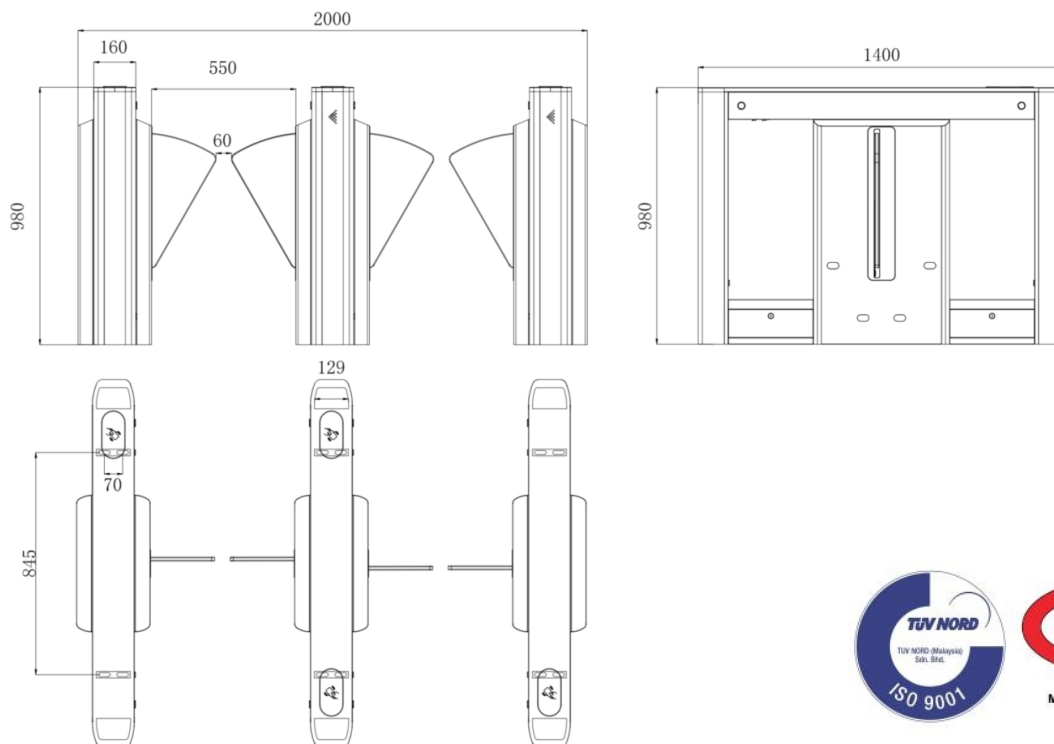
✓ **Easy Integration**

FPG257 can be integrated with any access control terminal through dry contact.

Technical Parameter

Description	Parameters
Body Material	Stainless Steel SUS304
Passage Width	550mm
Door Opening / Closing speed	Programmable, >0.6s.
Optimal Flow Rate	Up to 35 person per minute
Power Supply	AC220/110V±10%, 50/60Hz
Power Consumption	<150W (Operational)
Motor	DC Brushless Motor, 24V
Input Connection	Dry contact pulse
Working Environment	Indoor and sheltered outdoor
Working Temperature	-20°C - 70°C
Relative Humidity	≤ 90%, non-condensing
Door Material	Acrylic
IP Rating	IP 4X
MCBF	>5 million cycles

Dimension



***Product performances is based on testing in a controlled environment. Your result may vary due to several external and environment factors.**

© COPYRIGHT 2026. This documentation served as a reference only. It is subject to change without further notice. All the diagrams and information in this documentation may not be duplicated or modified in any form without the written approval from the management.